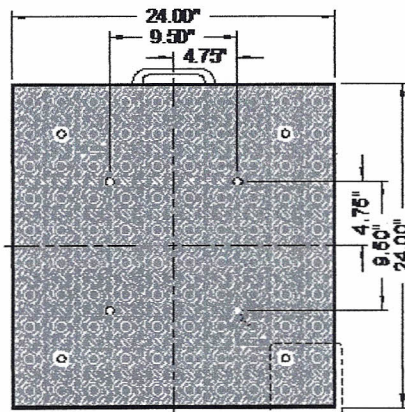
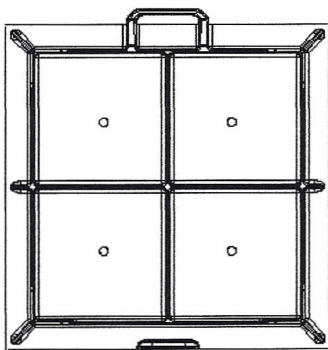


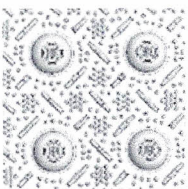


NEW DESIGN : DetectTILE Cast Iron Tiles

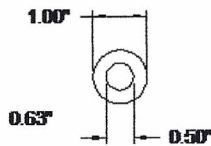
Patent Pending



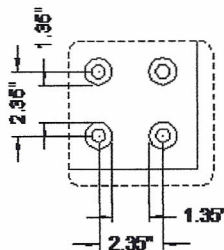
Diamond Tread Pattern



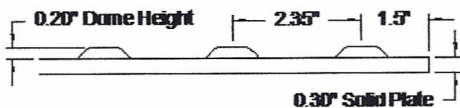
Material: CAST IRON
Tensile Strength: 30,000 psi



TRUNCATED DOME



DOMES SPACING



DETAIL A

AIR HOLE

DetectTile Cast Iron
ADA Compliant with
new fastener system:

- * Unique fastener system provides ease of installation for multiple tiles, no need for rigging bars attached to a pole.
- * Fastener maintains 1/4" margins between tiles for proper seating.
- * Fastener bar services as a convenient handle.
- * Ease of installation requiring less time.
- * Gives professional results at a competitive price.

Detectile Corporation (312)213-1507 or (630)734-0277

www.detectile.com